

Community Services, Libraries & Heritage

Heritage Services

Heather Wills
Birthe Christensen
Judith Etherton



INVESTOR IN PEOPLE

Heritage - the borough's keystone

- Records and interprets the borough's history and its cultural diversity
- Promotes social inclusion
- Assists community cohesion
- Enriches the life of residents of all ages
- Creates pride in the borough



INVESTOR IN PEOPLE

The borough's historic buildings



Valence House

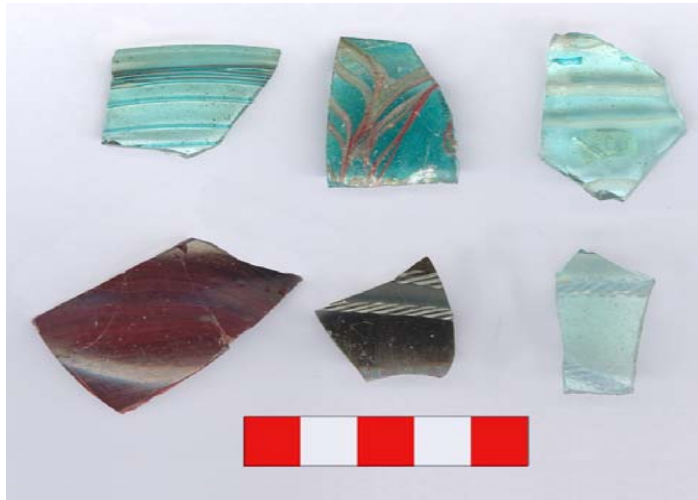


Eastbury Manor House



INVESTOR IN PEOPLE

What we do...



INVESTOR IN PEOPLE

more services



INVESTOR IN PEOPLE

Major capital projects

- Eastbury Manor House
 - £989k HLF funding (phase 2)
 - £1m HLF funding (phase 3)
- Valence House
 - £1.9m HLF funding



INVESTOR IN PEOPLE

Eastbury HLF project phase 3

- Create a permanent exhibition showing the story of the house and its inhabitants
- Provide interpretation of the rooms for the benefit of all house users
- Create facility for temporary exhibitions
- Enclose stair in ruined turret to enable the house to be enjoyed by different user groups concurrently



INVESTOR IN PEOPLE

Eastbury – permanent exhibition



INVESTOR IN PEOPLE

Eastbury – turret access



INVESTOR IN PEOPLE

Eastbury – volunteer involvement



INVESTOR IN PEOPLE

HLF projects – Valence House

- Build a new Visitors Centre – more space and support for education and leisure visitors
- Reconnect Valence House to its park
- Refurbish the Museum and the displays
- Provide appropriate storage for collections



INVESTOR IN PEOPLE

Valence - the approach now



INVESTOR IN PEOPLE

The surroundings today



INVESTOR IN PEOPLE

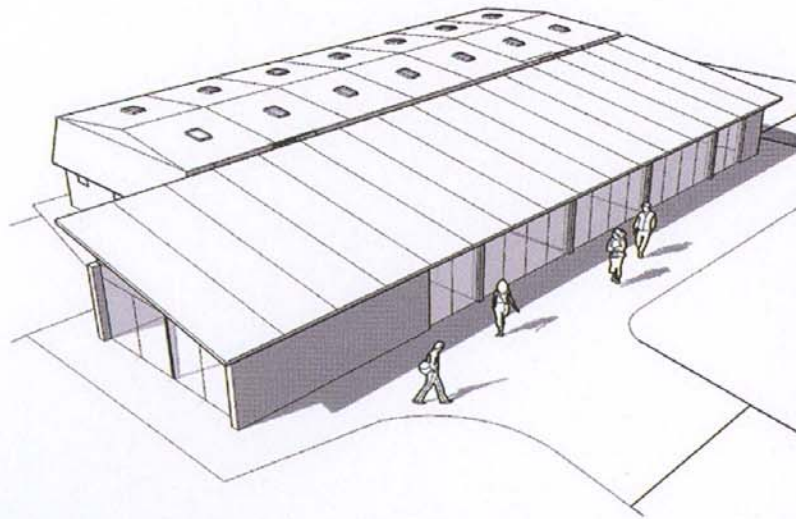
The London Borough of
Barking & Dagenham

www.barking-dagenham.gov.uk

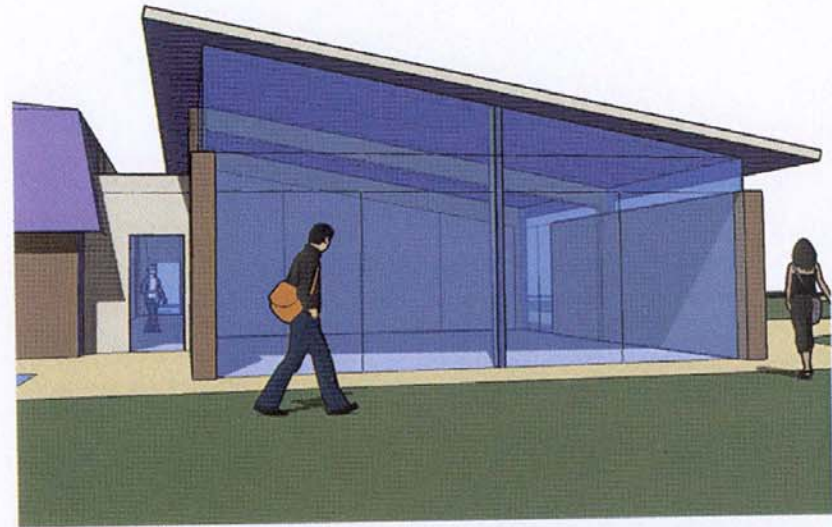
Re-connect the house to its park



Visitors' Centre - artist's impression



View of the new Visitor Centre



View of the new cafe facing onto the moat



INVESTOR IN PEOPLE

Heritage Services – the vision

- Increase the number of visitors by providing high quality, interconnected museum, local studies and archives services
- Enable visitors to understand the history of Eastbury in its local and wider context
- Provide all local schools with the opportunity to engage with their local heritage
- Make history more accessible to a wide and diverse audience



INVESTOR IN PEOPLE